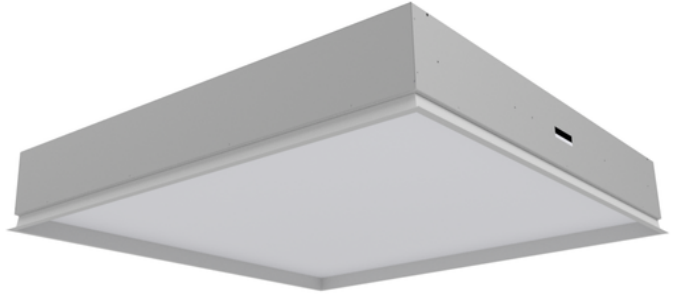


HIGH EFFICIENCY LED "T" GRID REGRESSED LENS



FEATURES

- Recessed lens troffer, 8" plenum depth
- Direct distribution
- Nominal 2' x 2', 2' x 4', 3' X 3' and 4' X 4'
- Lens regressed 1.63"
- Damp Location Rated, cETLus Listed
- Multiple output choices per size
- 2700 to 5700k, Tunable White and Color options
- 80CRI standard, 90CRI optional
- 0-10v dimming down to 1% standard, other options available
- Lens diffuser options
- Recessed T-Grid mounting, flange kit for 2' x 2' and 2' x 4' sizes only
- White powder coat standard, custom colors available

FIXTURE/TYPE(S):

PROJECT:

SC2175

UNV

SERIES MOUNTING COLOR TEMP LUMEN OUTPUT SIZE DIFFUSER FINISH VOLTAGE OPTIONS

MOUNTING

FL - FLANGED (FLANGED KIT FOR 2'x2' AND 2'x4' ONLY)
T - T-GRID INSTALLATION (CLIPS INCLUDED)

COLOR TEMP+

- 27K - 2700K
- 30K - 3000K
- 35K - 3500K
- 40K - 4000K
- 50K - 5000K*
- 30KS - 3000K BIOS® Static
- 35KS - 3500K BIOS® Static
- 40KS - 4000K BIOS® Static
- 30KD - 3000-2700K BIOS® Dynamic
- 35KD - 3500-3000K BIOS® Dynamic
- 40KD - 4000-3500K BIOS® Dynamic

*NOT AVAILABLE W/ 90CRI

LUMEN

2'X2'	2'X4' AND 3'X3'	4'X4'
021 - 2100LM - 13.2W	042 - 4200LM - 26.4W	084 - 8400LM - 52.8W
033 - 3300LM - 20.4W	066 - 6600LM - 40.8W	132 - 13,200LM - 81.6W
051 - 5100LM - 30.6W	102 - 10,200LM - 61.2W	204 - 20,400LM - 122.4W
066 - 6600LM - 40.8W	132 - 13,200LM - 81.6W	264 - 26,400LM - 163.2W
087 - 8700LM - 60.0W ^	174 - 17,400LM - 120.0W ^	
099 - 9900LM - 63.6W **	198 - 19,800LM - 127.2W **	
132 - 13,200LM - 85.8W **	264 - 26,400LM - 171.6W **	
		348 - 34,800LM - 240.0W ^
		396 - 39,600LM - 254.4W **
		528 - 52,800LM - 343.2W **

^AVAILABLE IN BIOS® ONLY
**NOT AVAILABLE WITH BIOS®

SIZE

- 2X2 - NOMINAL 2'X2'
- 2X4 - NOMINAL 2'X4'
- 3X3 - NOMINAL 3'X3'
- 4X4 - NOMINAL 4'X4'

DIFFUSER

- WOA - WHITE OPAL ACRYLIC - APPROX TRANSMITTANCE 65%
- WPC - WHITE POLYCARBONATE - APPROX TRANSMITTANCE 58%
- FCA - FROSTED ACRYLIC - APPROX TRANSMITTANCE 83%

FINISH

- WHT - WHITE POWDER COAT
- CA - CUSTOM COLORS (CONSULT FACTORY)

VOLTAGE

UNV - UNIVERSAL (120/277V)

OPTIONS

- GLR - IN LINE FUSING
- EM - EMERGENCY BATTERY BACKUP
- 90C - 90+ CRI

+ See following pages for more information on this option

Some options may not be available in all combinations.
All fixture configurations subject to final factory approval.

Specifications and Dimensions are subject to change without notice.



BIOS Illuminated®

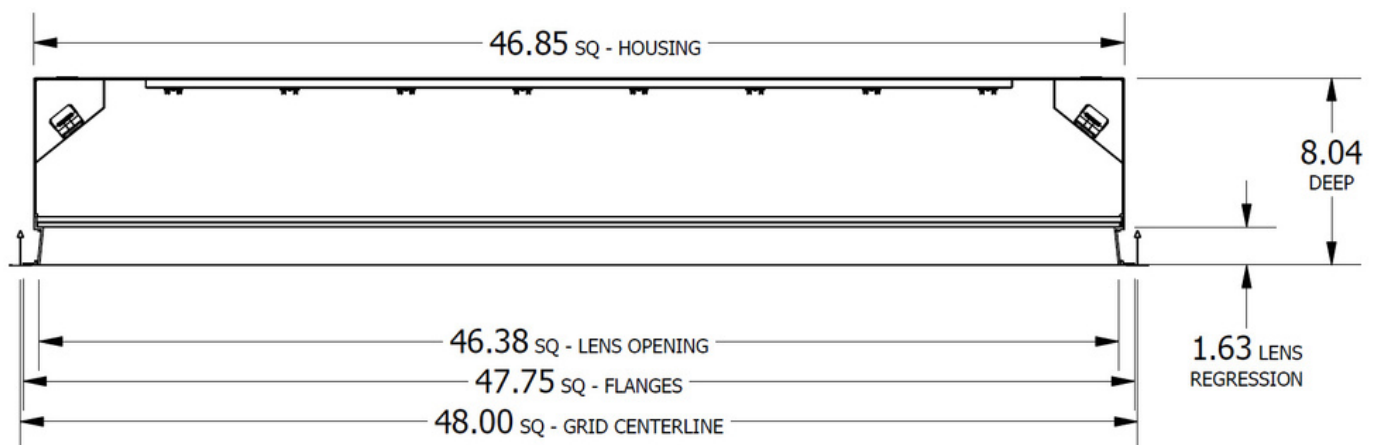
BIOS SkyBlue® lighting solutions contribute to satisfying Circadian Lighting Design Feature 54 under WELL Building Standard v1 and Feature L03 under the WELL Building Standard v2. BIOS SkyBlue also meets other features within the WELL Light Concept, including color quality with 83+ CRI and R9 values at 90, visual comfort metrics, and higher m/p ratios than traditional LED lighting.

STATIC LIGHT ENGINE - Option Codes 30KS, 35KS, 40KS

BIOS SkyBlue Static Spectrum lighting solutions support proper daytime circadian stimulus, communicating directly with human circadian biology through a non-visual photo receptor in the eye. With SkyBlue, there is no need for color tuning, color temperature adjustments or significantly increasing light levels. Consider the Static Spectrum Light Engine when the fixtures will illuminate spaces occupied primarily during the daytime hours.

DYNAMIC LIGHT ENGINE - Option Codes 30KD, 35KD, 40KD

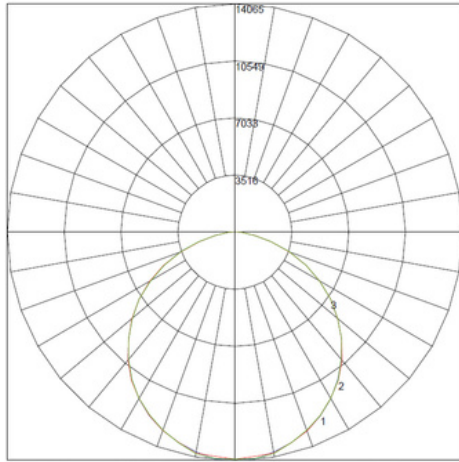
BIOS SkyBlue Dynamic Spectrum lighting solutions provide full daytime circadian stimulus, communicating directly with human circadian biology through a non-visual photo receptor in the eye. With SkyBlue, there is no need for color tuning, color temperature adjustments, or extra illumination. The SkyBlue Dynamic Light Engine automatically calibrates the light level, reducing melanopic lux while keeping photopic lux at a constant level when used in conjunction with proper dimming controls. Consider the Dynamic Spectrum Light Engine when the fixtures will illuminate spaces occupied during both daytime and nighttime hours.



TYPICAL - 4X4 SIZE SHOWN

IES INDOOR REPORT
PHOTOMETRIC FILENAME : SC2175-528-4X4-WOA.IES

POLAR GRAPH



Maximum Candela = 14065.17 Located At Horizontal Angle = 45, Vertical Angle = 5
 # 1 - Vertical Plane Through Horizontal Angles (45 - 225) (Through Max. Cd.)
 # 2 - Vertical Plane Through Horizontal Angles (90 - 270)
 # 3 - Vertical Plane Through Horizontal Angles (0 - 180)

ZONAL LUMEN SUMMARY

Zone	Lumens	%Lamp	%Fixt
0-20	5131.52	9.70	13.10
0-30	10888.91	20.60	27.70
0-40	17838.29	33.80	45.40
0-60	31477.65	59.60	80.10
0-80	38735.58	73.40	98.60
0-90	39298.75	74.40	100.00
10-90	37969.14	71.90	96.60
20-40	12706.77	24.10	32.30
20-50	19896.63	37.70	50.60
40-70	18422.66	34.90	46.90
60-80	7257.93	13.70	18.50
70-80	2474.63	4.70	6.30
80-90	563.17	1.10	1.40
90-110	0.00	0.00	0.00
90-120	0.00	0.00	0.00
90-130	0.00	0.00	0.00
90-150	0.00	0.00	0.00
90-180	0.00	0.00	0.00
110-180	0.00	0.00	0.00
0-180	39298.75	74.40	100.00

Total Luminaire Efficiency = 74.40%

CHARACTERISTICS

Lumens Per Lamp	4400 (12 lamps)
Total Lamp Lumens	52800
Luminaire Lumens	39299
Total Luminaire Efficiency	74 %
Luminaire Efficacy Rating (LER)	91
Total Luminaire Watts	430.8
Ballast Factor	1.00
CIE Type	Direct
Spacing Criterion (0-180)	1.26
Spacing Criterion (90-270)	1.26
Spacing Criterion (Diagonal)	1.38
Basic Luminous Shape	Rectangular w/Sides
Luminous Length (0-180)	3.98 ft
Luminous Width (90-270)	3.98 ft
Luminous Height	0.67 ft